



HitmanPro.Alert

Getting Started

1 Introduction

HitmanPro.Alert is a solution that provides real-time protection for home and business PCs to guard against prevalent and zero-day software exploits, drive-by downloads, crypto-ransomware, online fraud, espionage and identity theft.

It protects your computer systems even before new and undiscovered threats are formally addressed by security updates and antimalware solutions.

2 Install

2.1 Prerequisites to Install HitmanPro.Alert

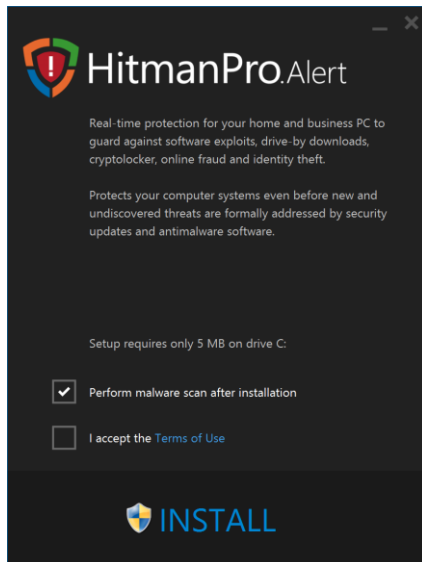
Before installing HitmanPro.Alert, make sure that the target PC meets the following prerequisites:

- 5 MB disk space, 20 MB recommended
- Any 32-bit (x86) or 64-bit (x64) processor, Intel® Core™ i3, i5 or i7 recommended
- One of the following operating systems:

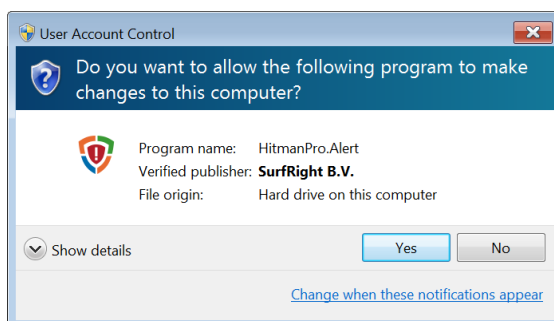
Operating System	32-bit (x86)	64-bit (x64)
Microsoft Windows XP with Service Pack 3 (SP3)	✓	✗
Microsoft Windows Vista	✓	✓
Microsoft Windows 7	✓	✓
Microsoft Windows 8.1	✓	✓
Microsoft Windows 10	✓	✓

2.2 Install HitmanPro.Alert

1. Download the software, **hmpalert.exe**: <http://www.hitmanpro.com/downloads>
The single installation file is designed for both 32-bit and 64-bit versions of Windows.
2. Make sure you are connected to the internet and run the HitmanPro.Alert installation file, **hmpalert.exe**. The install dialog appears:



3. Place a checkmark in the checkbox in front of **I accept the Terms of Use**.
4. Click on the large **INSTALL** button at the bottom of the window to start installation.
5. On Windows Vista, Windows 7, Windows 8.1 and Windows 10, a User Account Control dialog may appear. Select **Yes**.



6. The HitmanPro.Alert main interface will appear: **Preparing for first use ...**

During first-use-preparation, the default settings are created and (on home computers) a free trial license will be requested with the license server on the internet. When granted, the status in the dialog will change to **You are protected against cyber attacks**.

3 Standard interface

On initial install, HitmanPro.Alert will open with its **Standard interface**, suitable for home users who are not familiar with how malware and exploit attacks work:



Element explanation:



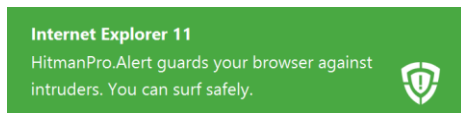
1. **Protection status**, will update when certain protections are disabled or when license expires
2. **Scan computer** starts an on-demand malware scan, also shows elapsed time since last scan
3. **Safety notification** settings, including configuration of the **Colored window border**
4. **Product activation status** opens product activation dialog
5. Visible when the processor hardware is successfully configured to assist **exploit protection** (supports Intel® Core™ i3, i5 or i7 processors)
6. **Number of alerts** recorded by HitmanPro.Alert in the Windows Event Log
7. **Last alert** shows the date of the last intercepted attack
8. **Gear icon** ⚙️ offers access to the **Advanced interface**, **Language** and **Reset settings**
9. **Benefits and advantages** opens web page <http://www.hitmanpro.com/alert>

3.1 Notifications

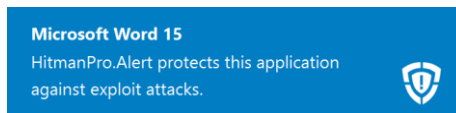
3.1.1 Safety notification

When you open a protected application (e.g. a web browser), a safety notification will appear in the top right corner of the screen. This notification gives the user confidence on the safety of the application in use.

Safe browsing



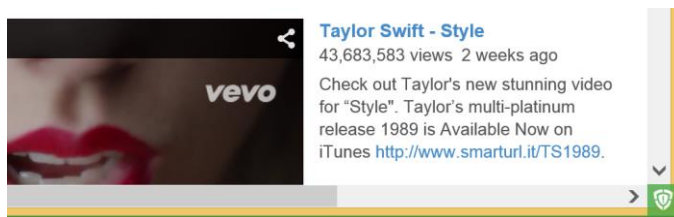
Exploit mitigations



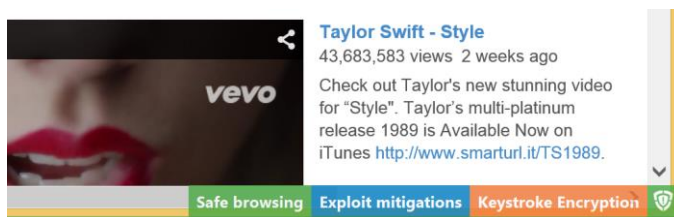
By default, web browsers will show a green notification. Other protected applications, like Microsoft Word, will show a blue notification. If you click on the notification, the HitmanPro.Alert window will open. In this window you can change the behavior of the safety notifications and make other settings.

3.1.2 Colored window border

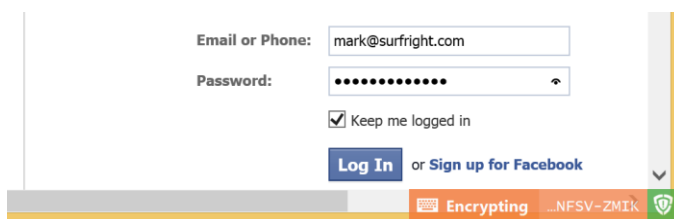
When you hover the mouse above the window title area of a protected application, a colored window border (green or blue) will be drawn. This colored window border will automatically disappear after a few seconds. When visible, you will also see a HitmanPro.Alert logo badge in the lower right corner of the colored window border:



When you click on the badge, HitmanPro.Alert will show which general protections are currently active:

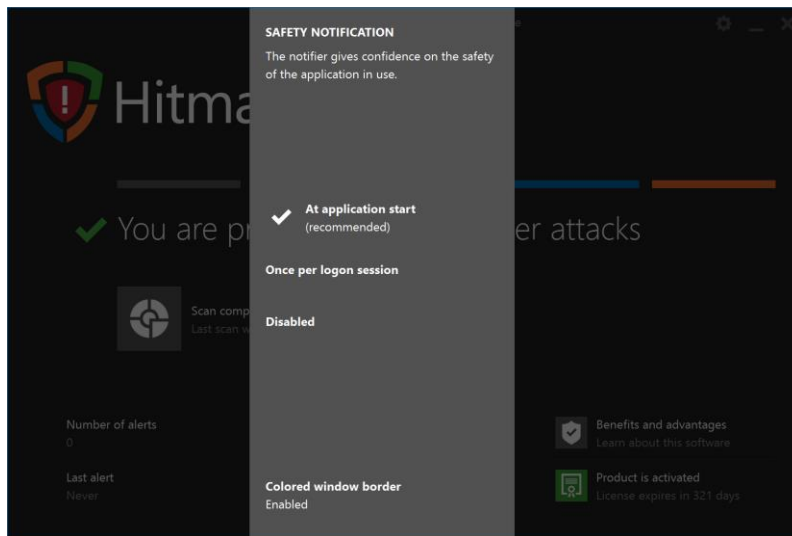


When you type in your web browser, e.g. when you log in to Facebook, your keystrokes are encrypted, turned into gibberish for keyloggers, as made visible in the live Keystroke Encryption indicator:

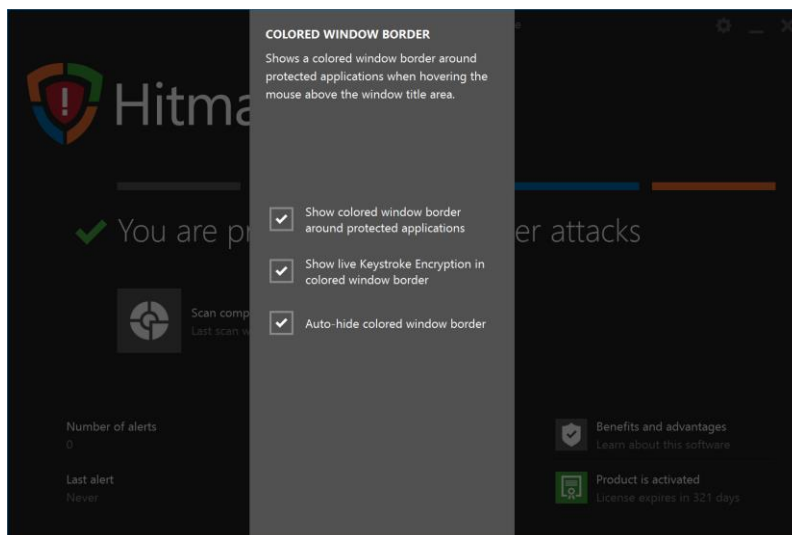


3.1.3 Settings

If you want to change the settings of the **Safety notification** or **Colored window border**, open HitmanPro.Alert and click on Safety notification. This will open the corresponding menu. Here you can change when the **Safety notification** should appear, or disable it completely. The current setting is checked.



To configure the **Colored window border**, click on the corresponding entry at the bottom of the Safety notification menu. This will open its configuration menu:



To exit the menu, simply click outside the gray area.

Note: You may need to close and re-open running protected applications before changes in the **Colored window border** settings take effect.

3.2 License


To enable all protection capabilities of HitmanPro.Alert, a license is required. During initial setup, home users are granted a free HitmanPro trial license, which is valid for 30 days and enables all features. This license is identical to the one used for our on-demand second opinion HitmanPro Anti-Malware tool.

If the computer already enjoyed a free but expired HitmanPro license, a free trial for HitmanPro.Alert is not available. Commercial (paid) licenses can be purchased online: <http://www.hitmanpro.com/shop>

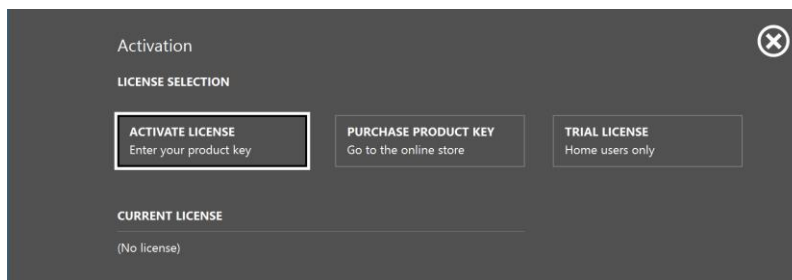
After purchasing a license, you will receive an e-mail with a personal product key that you must enter and activate in HitmanPro.Alert.

3.2.1 Activate Product Key

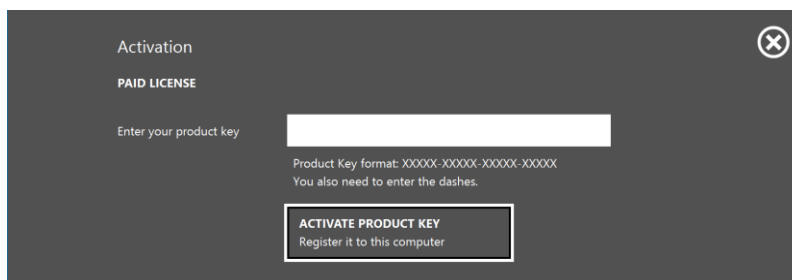
To activate the Product Key of your paid license, follow these steps:

1. Make sure you are connected to the internet
2. Open HitmanPro.Alert
3. Click on the  icon of the **product activation status** in the lower right corner of the window.

The Activation menu will appear:



4. Select **Activate License** to enter your product key:



5. Click on the **Activate Product Key** button to register it to the computer. Activation will take a moment (max. 1 minute).